

CARE OF THE A600

Even a coffee machine like the A600 must be cared for. To ensure high-quality flavor, the A600 must be cleaned at least once a day and serviced at regular intervals.

Introduction to automatic cleaning



Your responsibility for the perfect coffee experience.

The perfect coffee experience depends on a perfectly cleaned coffee machine.

Increase the quality of your products!

Clean your coffee machine at least once a day and more frequently if necessary.

Follow the 5-step method for all removable parts.

Accessories required:

- Cleaning tablets
- Microfiber cloth
- Brush set
- Cleaning container
- Clean solution



5-step method for removable parts



Cleaning and maintenance plan

Frequency	Task	Information
Daily	Clean the A600	See p. 33
	Clean the steam wand	See p. 33
	Clean the interior, the inside of the door and the door seal in the refrigeration unit	See p. 36
	Clean the internal water tank	See p. 36
	Clean the external water tank/wastewater tank and connecting lines	See p. 36
	Clean the milk hose and suction filter of the milk container	See p. 36
Weekly	Clean the coffee bean hopper	See p. 35, Image 1-5
	Clean the powder container	See p. 35, Image 6-9
	Clean the brewing unit	See p. 35, Image 10
If needed/prompted	Rinse the A600	See p. 34
	Descale the jet regulator for hot water	See p. 36, Image 14
	Replace the water filter in the water tank	See p. 36, Image 7, 9
Annually or after every 40,000 drinks	Maintenance by service technician	Contact a service technician

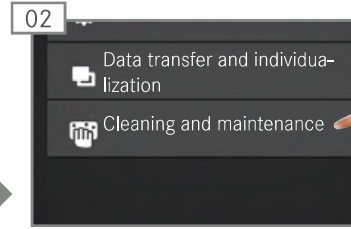
Starting the automatic cleaning



Switch to Maintenance level.
Authenticate with the PIN code if necessary.



The factory-set PIN code is 1111.

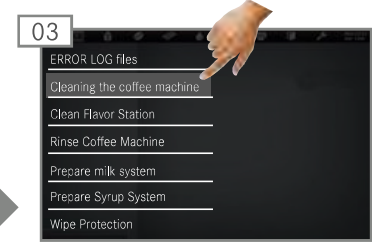


Select Cleaning and maintenance.



Danger of scalding.
During cleaning, hot water and steam are released repeatedly.

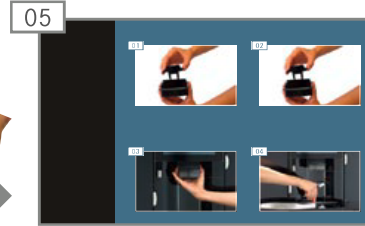
- Do not touch the outlets or the area beneath them.



Select Clean Coffee Machine or Clean Flavor Station and confirm.



Follow the instructions on the operating interface and confirm with Continue.



The machine guides you to the next step.



After the cleaning cycle, the machine switches back to either the maintenance level or to the energy saver mode.
Your Service technician can set the desired option for you.

Clean the steam wand



Fill container to approx. 5 cm with cold water and 30 ml of clean solution.
Place under the steam wand for approx. 1 minute.



Select Autosteam/Steam.
The steam wand is being cleaned.



Empty the container.
Fill the container with cold water and place under the steam wand.



Select Autosteam/Steam.
The steam wand is being rinsed.

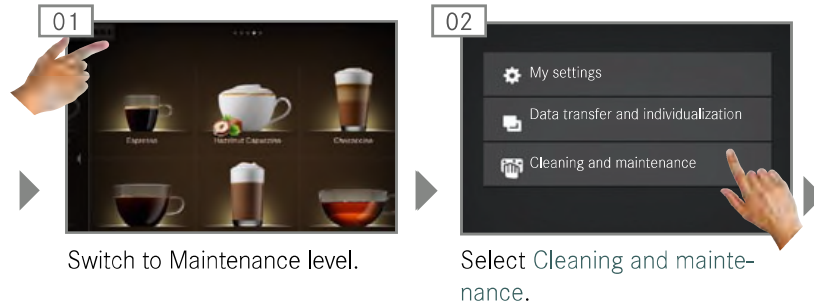


Empty the container
Wipe the steam wand with a cloth.

Rinse Coffee Machine



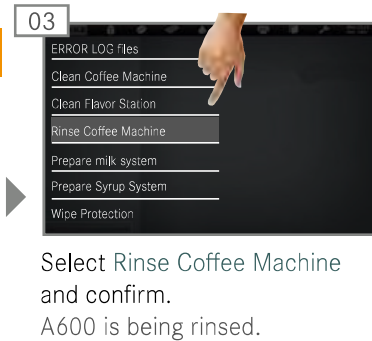
- Rinsing is not a substitute for daily cleaning. Rinsing is necessary to remove residue build-up in the coffee and milk systems.
- The A600 automatically rinses after certain time intervals as well as when it is switched on or off.



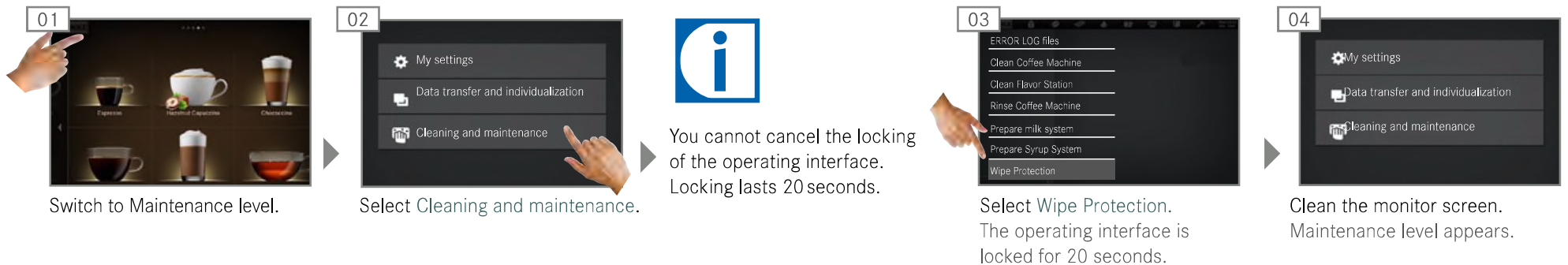
WARNING

Danger of scalding.
Hot water is released during rinsing.

- Do not touch the outlets or the area beneath them.
- Do not place anything on the drip grid.



Cleaning the monitor screen



You cannot cancel the locking of the operating interface. Locking lasts 20 seconds.

Cleaning the bean hopper and powder container (weekly)



01 Open the door.



02 Pull the locking slide all the way to the front.



03 Lift up the bean hopper. Empty the bean hopper.

NOTE

Soiling, formation of mildew

The bean hopper dries slowly and can continue to release moisture during fitting.

- Do not bring the bean hopper into direct contact with water.
- Only use a damp cloth for cleaning.
- Remove detergent residue.



04 Rub out the bean hopper with a dry cloth.



05 Attach the bean hopper.



06 Lift the powder container up. Empty the powder container.



07 Clean the powder container with a cloth. Use detergent if necessary. Rub out the powder container with a dry cloth.

CAUTION

Cutting injuries/crushing

The powder container's conveyor mechanism can cause cuts or crushing injuries.

- Exercise care when cleaning the powder container.



08 Clean the powder chute with a brush.



09 Attach the powder container.



10 Push the locking slide all the way to the rear.

NOTE

Impairment of function

If the bean hopper and powder container are not locked correctly, this may impair both the function of the coffee machine and the product quality.

- Push the locking slide all the way to the rear.

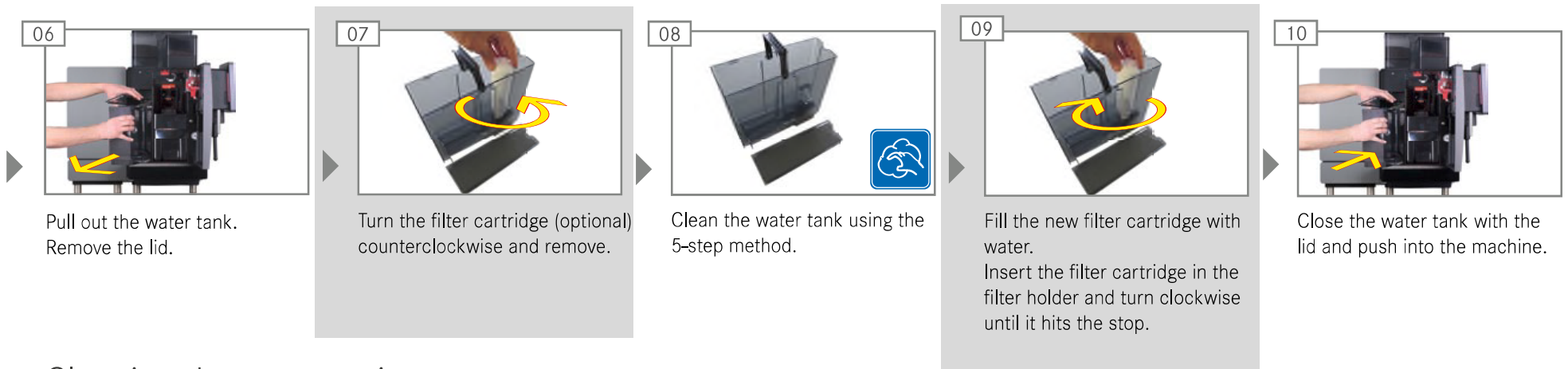


11 Close the door.

Cleaning the brewing unit



Cleaning the internal water tank/Replacing the filter cartridge



Cleaning the accessories

NOTE

Impairment of function

Soiled accessories can have a negative affect on the function and quality of the drinks.

- Clean the accessories using the 5-step method.
- Follow these instructions for accessories.

