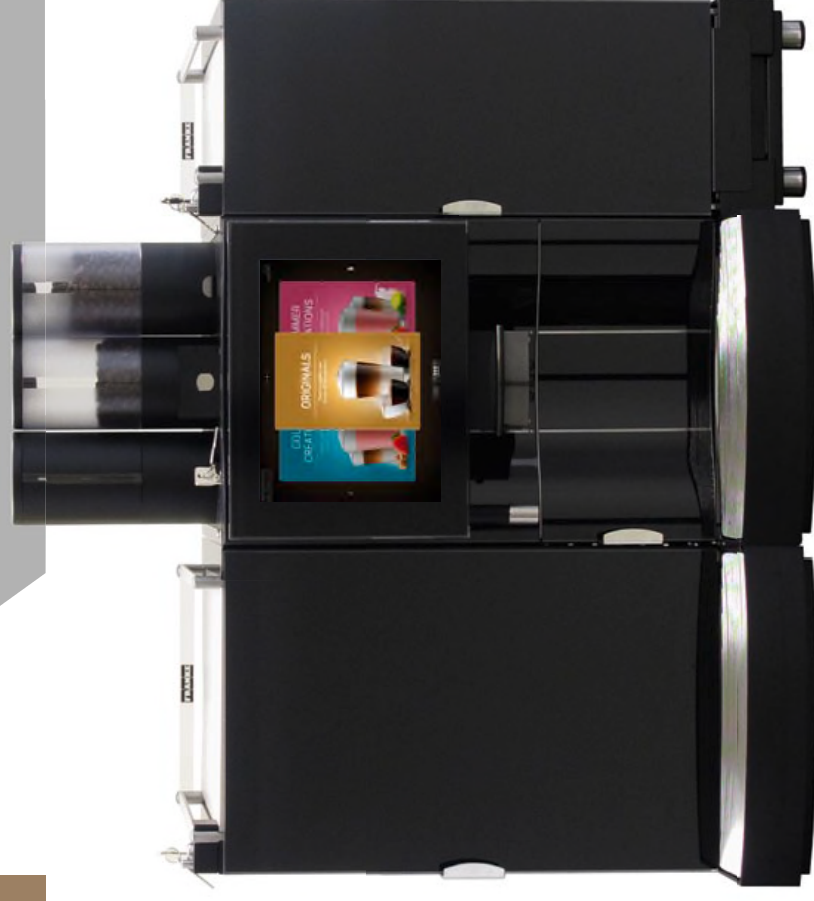


FM800

Original Operating Instructions



Read the operating instructions and the chapter on safety information before operating the machine. Keep the operating instructions near the machine.



Care of the FM800

Even a coffee machine like the FM800 must be cared for. To ensure high-quality flavor, the FM800 must be cleaned at least once a day and serviced at regular intervals.

Introduction to the automatic cleaning



Your responsibility for the perfect coffee experience

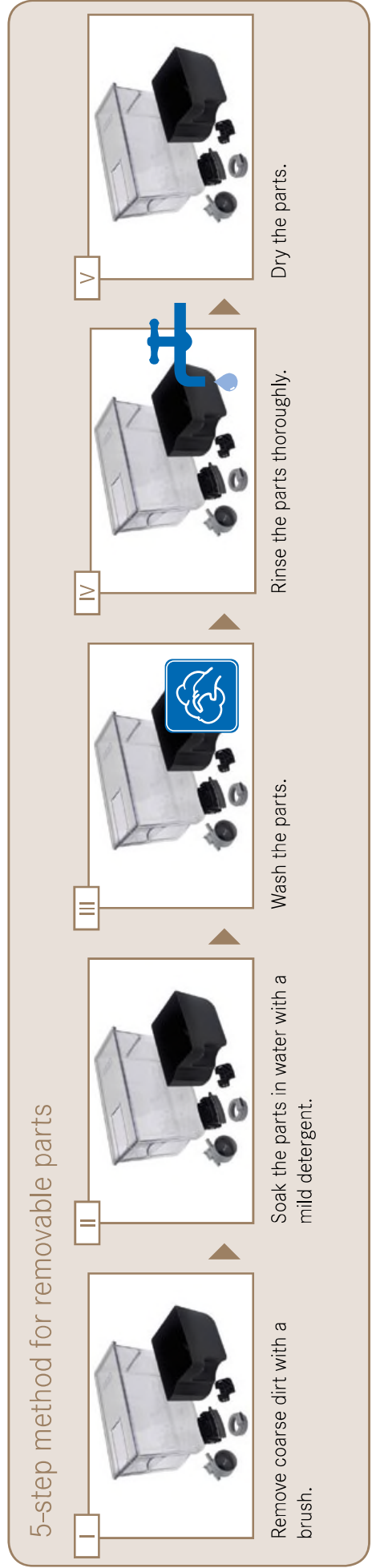
The perfect coffee experience depends on a perfectly cleaned coffee machine. Increase the quality of your products!

Clean your coffee machine at least once a day and more frequently if necessary.

Follow the 5-step method for all removable parts.

Accessories required:

- Cleaning tablets
- Microfiber cloth
- Brush set
- Cleaning container
- Cleaning solution



This is how you start the automatic cleaning



01

Switch to Maintenance level.
Authenticate with the PIN code if necessary.



The factory-set PIN code is 1111.

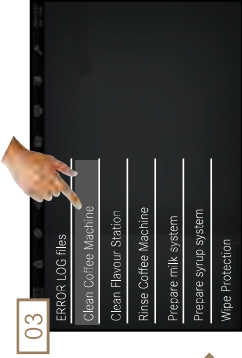


02

Select Cleaning and maintenance.



Danger of scalding!
During cleaning, hot water and steam are released repeatedly. Do not touch the outlets below the outlets or the outlets themselves.



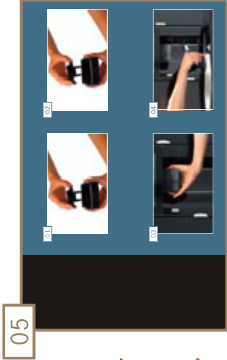
03

Select and confirm Clean Coffee Machine/Clean Flavour Station.



04

Follow the instructions on the operating interface and confirm with Continue.



05

The machine guides you to the next step.



The machine can either switch back to the Maintenance level or go into energy saver mode. Your Service technician can set this option for you.

Rinsing the FM800 manually



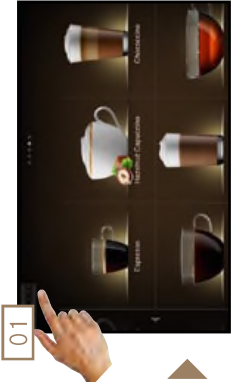
- Rinsing is no substitute for daily cleaning! Rinsing is necessary to remove residue build-up in the coffee and milk systems!
- The FM800 automatically rinses after certain time intervals, as well as when it is switched on or off.
- The machine should be rinsed before initial use and when not in use for extended periods (more than 2 days).



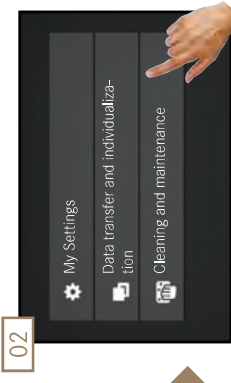
Danger of scalding!
Hot water is released during cleaning.
Do not touch the machine below the outlets or the outlets themselves.
Do not place anything on the drip grid.



Select and confirm Rinse Coffee Machine.
FM800 is being rinsed.

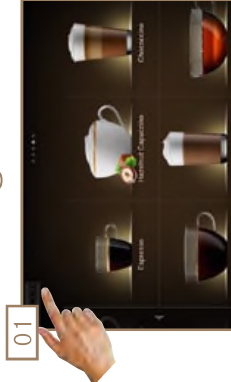


Switch to Maintenance level.

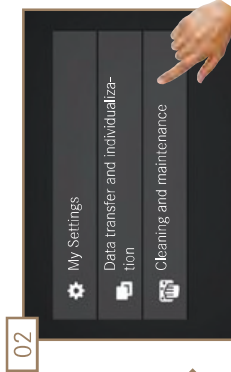


Select Cleaning and maintenance.

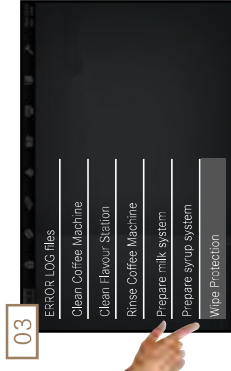
Cleaning the monitor screen



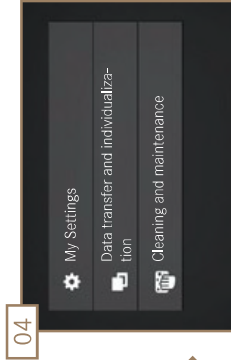
Switch to Maintenance level.



Select Cleaning and maintenance.



Select Wipe Protection.
The operating interface is blocked for 20 seconds.



Clean the monitor screen.
Service level appears.



You cannot cancel the blocking of the operating interface. The blocking lasts 20 seconds.

Maintenance plan

Frequency	Task	Information
Daily	Clean the FM800	See page 30
Daily	Rinse the FM800	See page 31
Weekly	Clean the coffee bean hopper	See page 20
Weekly	Clean the powder container	See page 20
Every six months, every 40,000 products or as necessary	Maintenance by Service technician	Contact a Service technician.